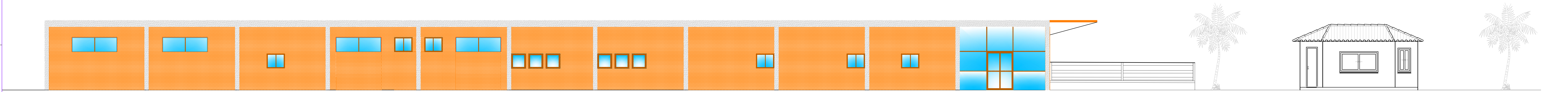
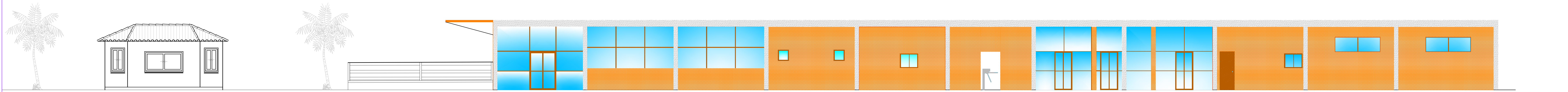


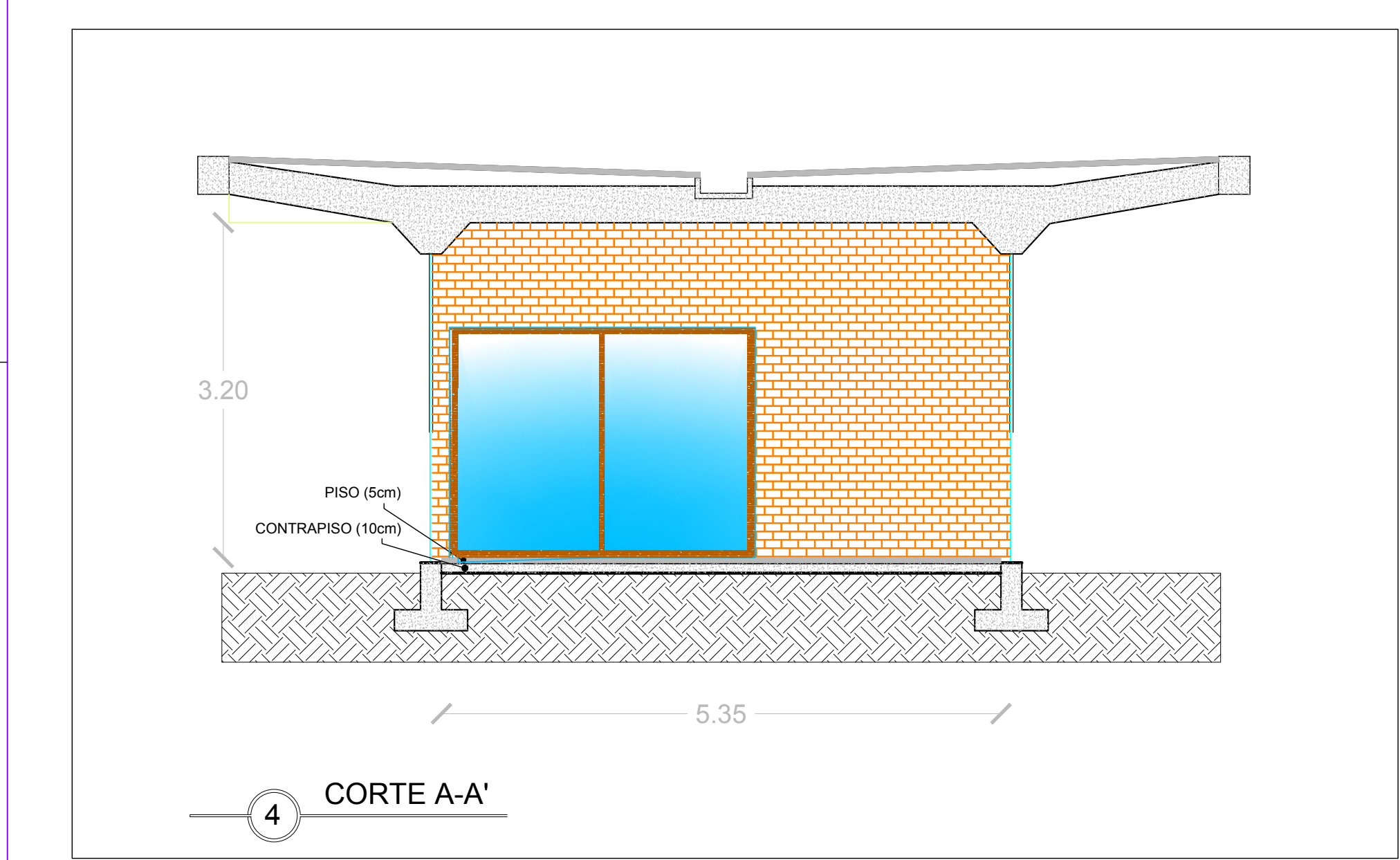
1 PROJETO ARQUITETÔNICO  
esc 1:75



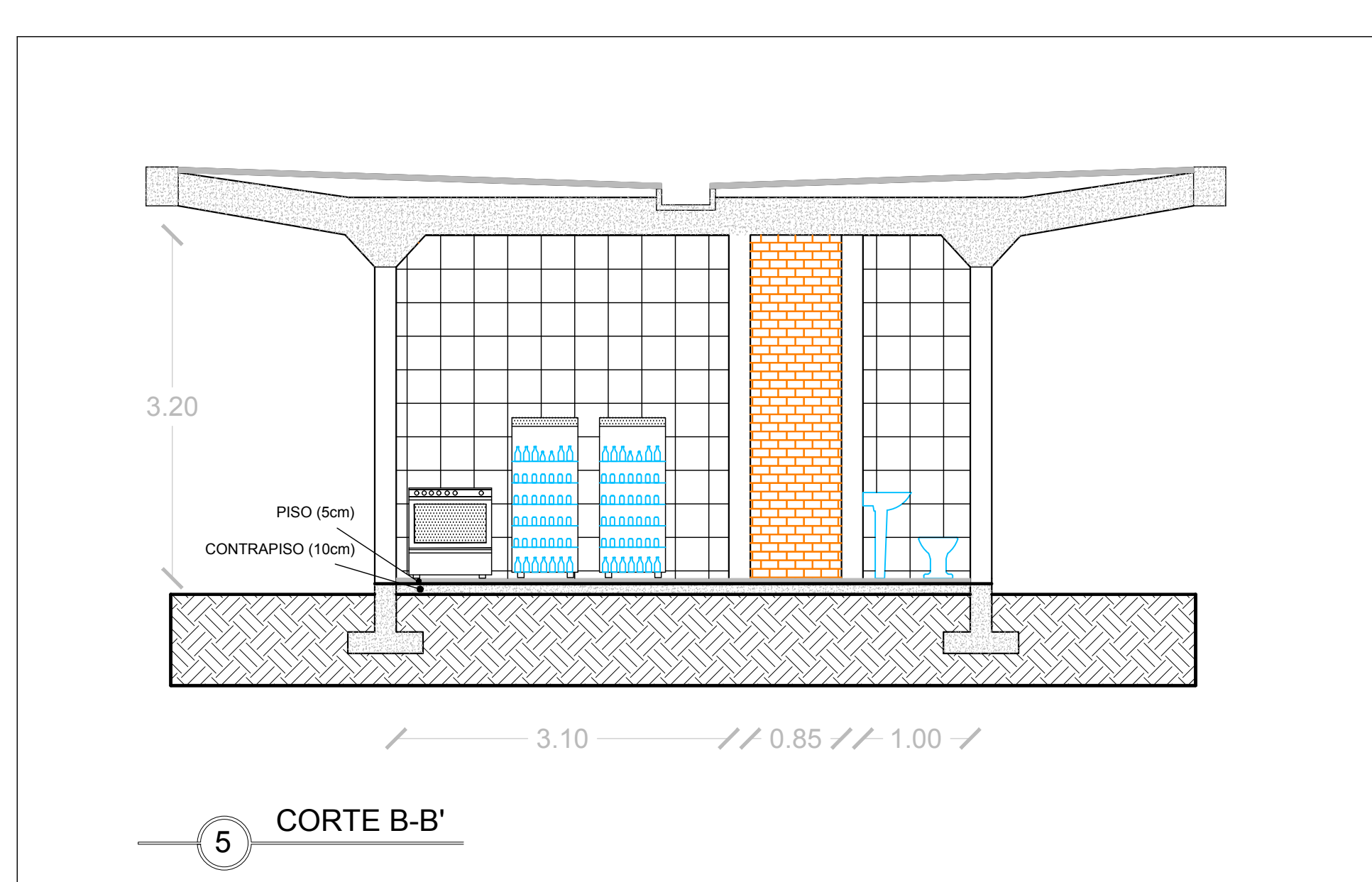
2 FACHADA NW  
esc 1:75



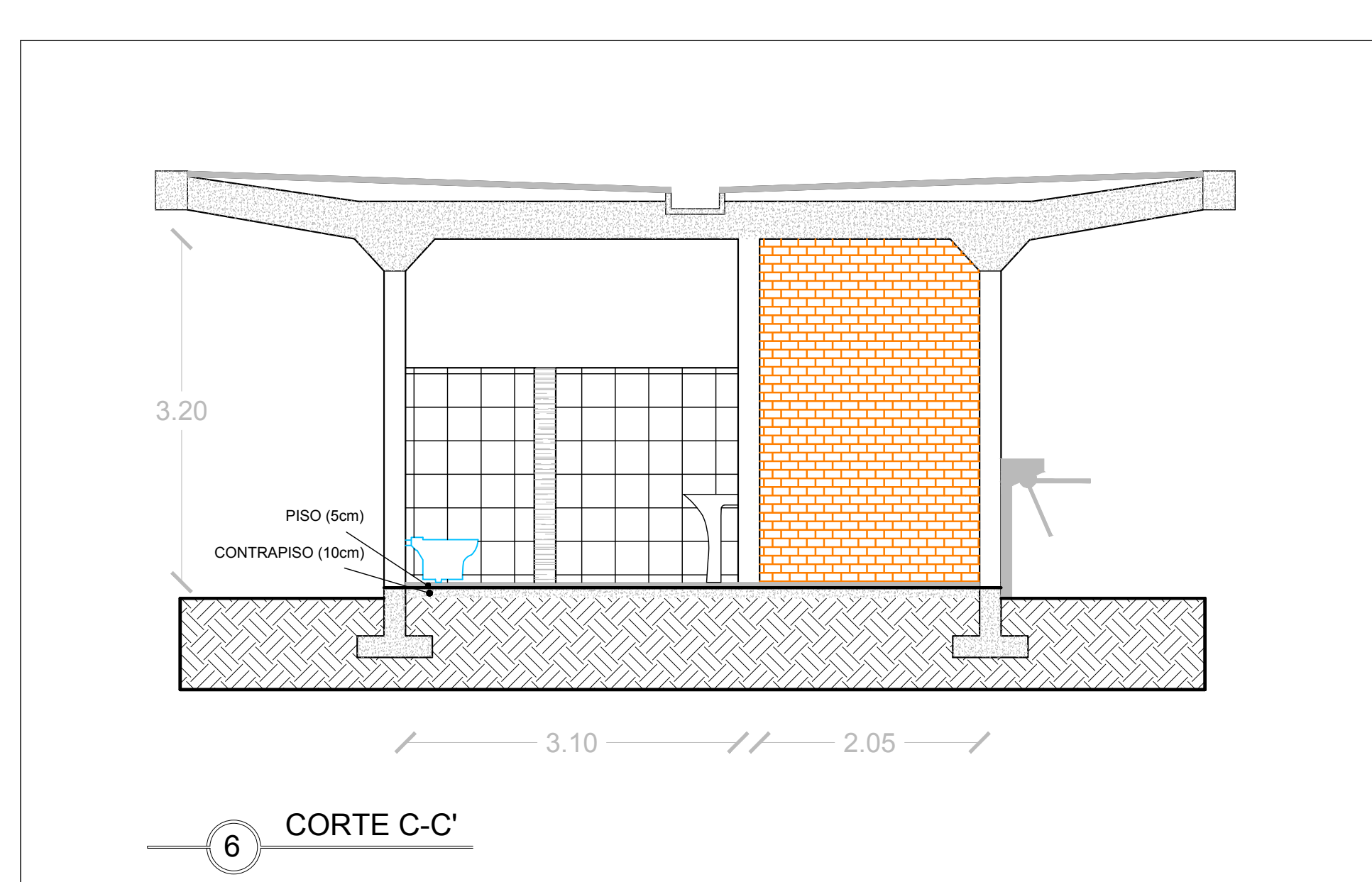
3 FACHADA SE  
esc 1:75



4 CORTE A-A'

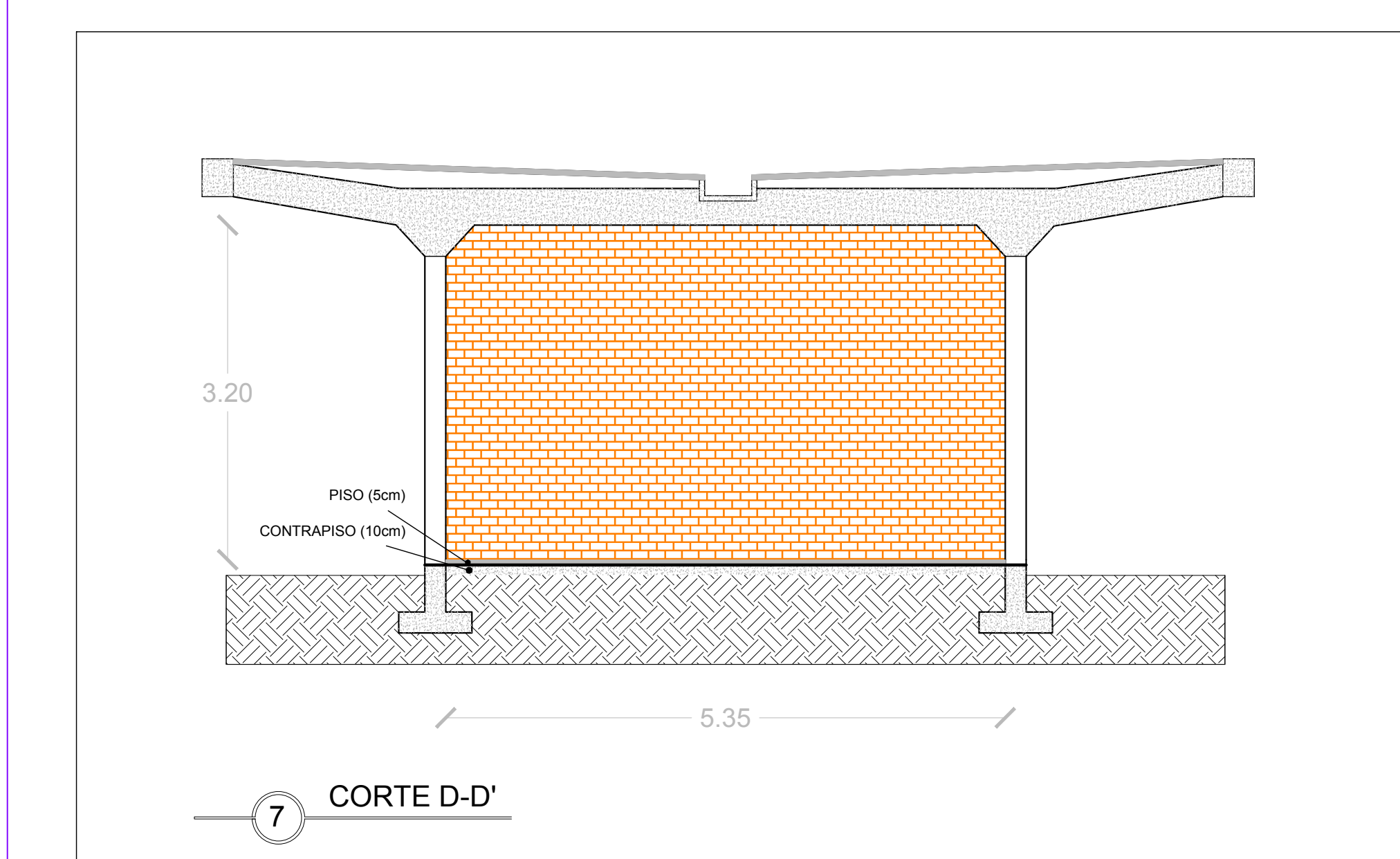


5 CORTE B-B'

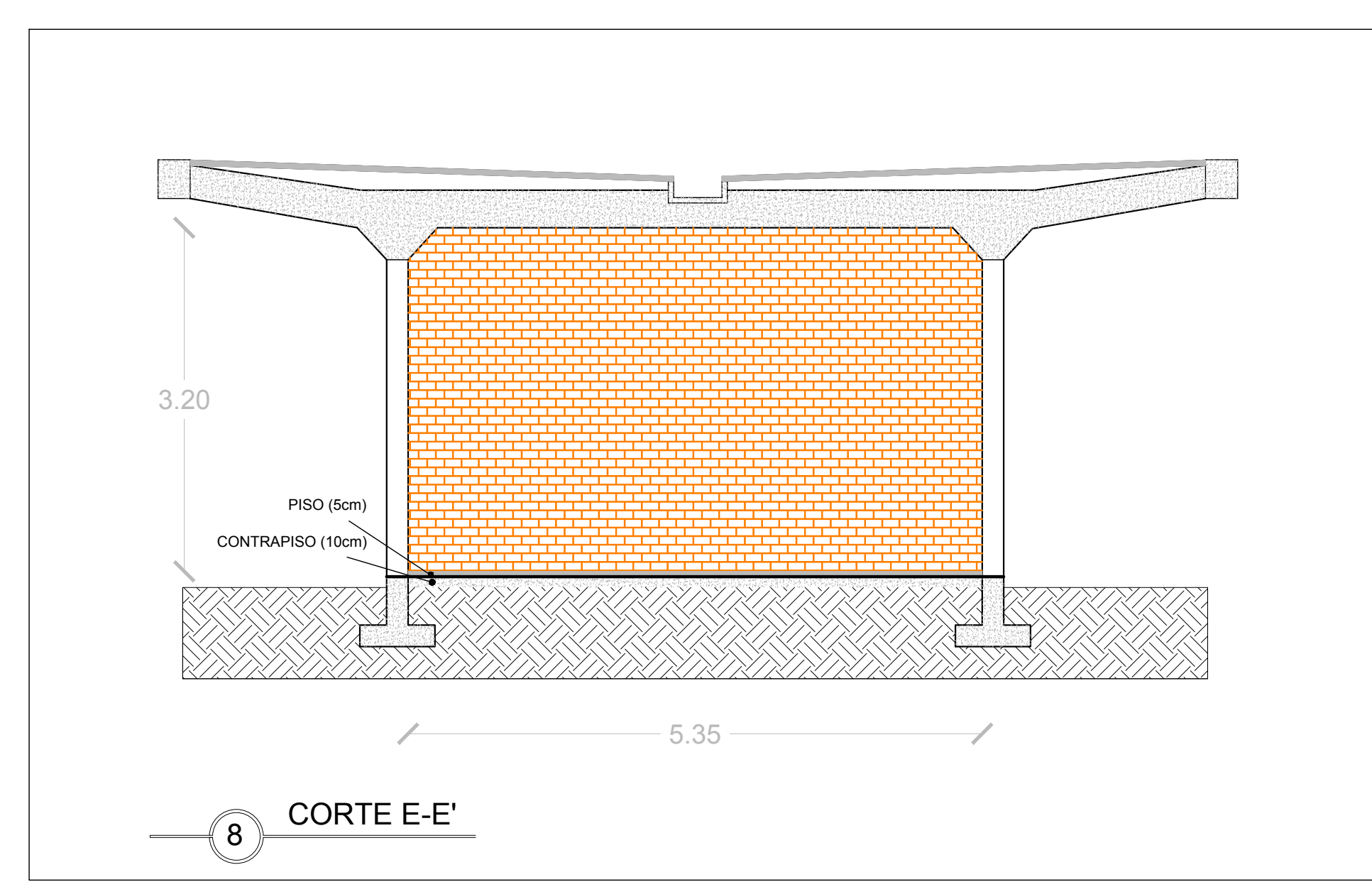


6 CORTE C-C'


| LEGENDA |                                  |
|---------|----------------------------------|
| *       | ABERTURA EXISTENTE               |
| X       | ROLETA DE ACESSO P/ BANHEIROS    |
| —       | PAREDE EXISTENTE                 |
| —       | PAREDE NOVA                      |
| —       | PAREDE COM VIDROS ACIMA DE 1,2 m |



7 CORTE D-D'



8 CORTE E-E'

|   |                     |                     |                   |
|---|---------------------|---------------------|-------------------|
|  <b>PREFEITURA MUNICIPAL DO RIO GRANDE</b><br>Secretaria de Município do Cassino |                     |                     |                   |
| Obra/Local: Projeto Arquitetônico - Prédio Antiga Rodoviária<br>Av. Atlântica esq. Av. Rio Grande   |                     |                     |                   |
| Especificação: Planta baixa, fachadas e cortes  |                     |                     |                   |
| Resp. Projeto: Eng. Civil Gilberto Arabidian Junior, CREA-RS: 159864  |                     |                     |                   |
| Secretário: Sandro Figueiredo de Oliveira   |                     |                     |                   |
| Desenho:<br>Vinícius Brinkerhoff Pereira/<br>Camilla Silveira   | Data:<br>Junho/2019 | Escala:<br>indicada | Princha:<br>02/02 |